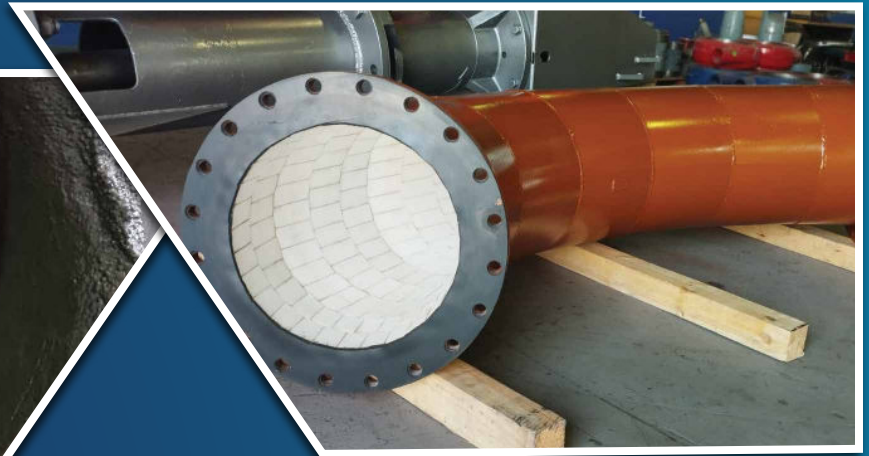


# MINING PRODUCTS



**TECHNICAL FINISHES**  
SPECIALIST FLOORING AND CONSTRUCTION SOLUTIONS



*We offer a comprehensive range of mining solutions ideally suited to the Africa region. Our range of specialised products have each been formulated to deliver on ultimate impact, abrasion and corrosion protection of plant and equipment. From the toughest cone crusher backing compounds, to a range of epoxy modified wearing compounds and ceramic tile epoxy adhesives to industry-leading protective coatings and linings, we have a solution.*

# WEAR RESISTANT COMPOUNDS

PRODUCT NAME	DESCRIPTION	AREAS OF APPLICATION
<b>SOLIDWEAR HP101</b>	A high performance, technically advanced epoxy wearing compound containing graded high alumina ceramic bead fillers up to 2 mm, in a blended epoxy resin system. Provides a long lasting lining to plant and equipment subject to a high degree of abrasive wear in highly acidic corrosive environments. Excellent slump resistance on vertical or overhead applications. Can cure underwater.	Any plant and equipment subject to erosion caused by abrasion from process materials. Common areas of application are pipe elbows, slurry lines, hoppers, chutes, settling tanks, cyclones, pump casings, etc. Excellent acid resistance > 60% sulphuric acid, strong acid blends typically used in mine processing. Applied from 5 mm up to 20 mm.
<b>SOLIDWEAR HP200</b>	A multi-purpose epoxy wearing compound containing a combination of ceramic fillers and beads, held uniformly in suspension in a blended high performance resin system. It is ideal for protecting wearing areas in plants which process fine slurries. Contains fine crushed angular aluminium oxide. Easy to trowel on large surfaces.	Any plant and equipment subject to erosion caused by abrasion from process materials. Common areas of application are feed chutes, spigots, pipe elbows, slurry lines, hoppers, chutes, settling tanks, cyclones, pump casings, etc. Excellent acid resistance > 30% sulphuric acid. Strong acid blends typically used in mine processing. Can be applied from 3 up to 10 mm.
<b>SOLIDWEAR HP250 FX</b>	A multi-purpose fast set epoxy wearing compound with a combination of irregular beads and alumina, interlocking to give ultimate wear characteristics. It is trowelable and hand smoothed with water to conform to any shape or covered surface.	Pipe elbows, hoppers, idlers, sleeves, pans, slurry chutes, wear plates, etc. Can be applied from 4 mm to 8 mm. Quick turnaround applications.
<b>SOLIDWEAR HP500</b>	A medium set, high performance epoxy novalac wearing compound containing graded high density ceramic fillers, providing excellent wear resistance, impact and chemical resistance, a long lasting lining to plant and equipment subject to a high degree of abrasive wear. Contains fine crushed angular fillers for optimum packing and wear resistance.	Any plant and equipment subject to erosion caused by abrasion from process materials. Common areas of application are feed chutes, pipe elbows, slurry lines, hoppers, chutes, settling tanks, cyclones, pump casings, etc. Excellent acid resistance > 50% sulphuric acid. Can be applied from 5 mm up to 10 mm.
<b>SOLIDWEAR HP800</b>	A superior quick set, high performance wearing compound using novalac resin technology for superior temperature, chemical and wear resistance. It contains graded high density ceramic fillers which gives excellent wear resistance, impact and chemical resistance. It is ideal for protecting high wearing areas processing acid slurries. Also suitable in chrome reduction plants.	High performance applications for any plant and equipment subject to erosion caused by abrasion from processing of materials. Also high impact applications. Common areas of application are feed chutes, spigots, pipe elbows, slurry lines, hoppers, chests, settling tanks, cyclones, pump casings, etc. Sulphuric acid > 60%. Can be applied from 5 mm up to 10 mm.
<b>SOLIDGUARD LV WEARKOTE</b>	A high performance silicon carbide filled ceramic epoxy using new generation epoxy technology to combine high impact resistance with abrasion and excellent corrosion resistance. Designed as a brushable grade wearing compound.	Recommended for abrasion resistant coating to pipes and pump casings including impellers, protection of slurry chutes, separators and slurry tanks, tank linings where continuous agitation causes erosion of steel. Applied from 0.5 mm to 1 mm.
<b>SOLIDWEAR HP PULLEY</b>	A high performance technically advanced pulley lagging wearing compound using co-polymer resin technology for superior temperature, chemical and wear resistance. It contains graded spherical ceramic fillers which gives excellent wear resistance, impact and chemical resistance. It is a "wet" easy to apply compound for difficult to reach applications and secondary pulleys.	Pulley lagging on small or large pulleys providing excellent wear and slip resistance.

**Solidwear**<sup>®</sup>  
WEARING COMPOUNDS

**Solidback**<sup>®</sup>  
BACKING COMPOUNDS

**Solidbond**<sup>®</sup>  
ADHESIVES

**Corrolam**<sup>®</sup>

**Solidguard**<sup>®</sup>  
RESIN SYSTEMS

**POLYSCREED**<sup>®</sup>  
Polyurethane Screeds

# CRUSHER BACKING COMPOUNDS

PRODUCT NAME	DESCRIPTION	AREAS OF APPLICATION
<b>SOLIDBACK HP</b>	A high performance backing which is made up of 100% solids co-polymer system for backing metal wear plates in large gyratory crushers and cone crushers. It offers excellent impact strength and resilience, together with high compression and tensile strengths. It is non-flammable, needs no melting or special equipment and has high volumetric stability that eliminates the formation of gaps between backing and liners or support structures.	High performance crusher backing for large processing plant such as gyratory crushers and cone crushers. Ideally suited to chrome, platinum and manganese and iron ores to improve liner life.
<b>SOLIDBACK ST</b>	A tough resilient backing ideal for cone and gyratory crushers, rotating mills, pulverisers and other heavy reduction machinery. It will suit many types of crushing operations such as 5 foot crushers and gold, copper and low strength ores.	Standard backing compound for secondary crushers. Ideal for crushing operations in gold, copper and low strength ores.

# EPOXY ADHESIVES

<b>SOLIDBOND SS</b>	Standard set epoxy paste filled with acid resistant fillers for high alumina ceramic tile lining.	General purpose adhesive with good working time and excellent adhesion onto steel and high alumina ceramic tiles.
<b>SOLIDBOND SS-B</b>	Standard set epoxy paste with fine graded silica providing gap filling properties and easy application.	General purpose adhesive for high alumina ceramic tiling with excellent adhesion and chemical resistance.
<b>SOLIDBOND 110 SS</b>	Solvent free, STANDARD SET epoxy adhesive for bonding high alumina ceramics where chemical resistance is required. May also be used for a wide range of adhesive applications where excellent adhesion and high chemical resistance is required.	Excellent adhesion to mild steel, ceramic, glass, concrete and G.R.P. Excellent chemical resistance and damp tolerant. Thixotropic for vertical and overhead applications. Good gap filling properties.
<b>SOLIDBOND QSP</b>	High performance QUICK SET PASTE epoxy adhesive for bonding high alumina ceramics where chemical resistance is required. Creamy soft, easy to apply. Consistency ideal in cold conditions. Cures down to 5°C.	Can be used for a wide range of adhesive applications where fast set, excellent adhesion and high chemical resistance is required. Damp tolerant and thixotropic for vertical and overhead applications.
<b>SOLIDBOND HI-BOND</b>	High performance impact modified epoxy adhesive for extreme applications. HI-BOND exhibits uncompromising bond and shear strength, coupled with unparalleled impact resistance and flexibility. Excellent adhesion on difficult steel substrates such as stainless steel.	Extreme applications where exceptional bond and shear strength is required without compromising flexibility. Outstanding adhesion to mild steel, stainless steel, aluminium, high alumina tiles and standard building materials. Thixotropic for vertical applications. Alumina tile pulley lagging.

# GROUTS & LININGS

<b>SOLIDGROUT 328</b>	High chemical resistant epoxy mortar for acid tile bedding in grouting.	Ideal for grouting of chemical resistant tiles and machine bases.
<b>SOLIDGUARD 58 HC-NOVA</b>	Chemical resistant, 100% solids blend of selected novalac epoxy resins cured with a high cross-linking activator formulated for coating, laminating or lining steel tanks, concrete bunds and other surfaces in heavy duty acid or highly alkaline environments.	Applied either as a roller coat or in combination with chemical resistant glass scrim-cloth as a crack and stress reinforcing membrane or as a lining system beneath acid bricks.
<b>CORROLAM RC</b>	A chemical resistant vinyl ester roller top coat that is used as protection in acid or highly alkaline environments. It can be applied over existing laminate systems of fibre wound tanks as a rejuvenation coat and can also be used as a top coat on new laminate systems.	Ideal for the protection of concrete walls, equipment and tank bases, floors and drains against aggressive chemicals in bund areas. Tank linings with aggressive chemicals. Acid bunds, tank lining top coats or rejuvenation coats.
<b>SOLIDGUARD HCP</b>	An extremely high chemical resistant Bis-F epoxy coating that is designed for demanding acid or highly alkaline environments offering high abrasion resistance.	For protection of concrete tanks, equipment bases, floors and drains against aggressive chemicals in extreme environments. Resistant to 70% sulphuric acid and ideal for tank farms, chemical storage, petroleum tanks, acid bunds, tank lining and loading bays.

# FLOORING

<b>POLYSCREED MD</b>	Abrasion and chemical resistant, medium duty flow applied polyurethane flooring system. Polyscreed MD is a "self-levelling" resin system which can be applied between 3 to 4 mm.	Mineral and chemical processing plants where chemical and abrasion resistance is required. i.e. battery storage areas, high forklift traffic areas and chemical bunded areas.
<b>POLYSCREED RT</b>	Heavy duty flow applied rake and trowel polyurethane flooring system which provides excellent impact and chemical resistance in acid and alkaline work environments. It is applied between 6 to 9 mm and temperature resistance of up to 120°C.	Bunded storage areas where high chemical, high temperature and high impact resistance is required.



Technical Finishes can offer tailored solutions for various industrial sectors and environments. The unique challenges, specific needs and stringent requirements of each industry sector receive our focused attention and are addressed with suitable customised specifications.

*Leading manufacturers of specialist epoxy and polyurethane flooring systems, specialised construction and corrosion protection products.*

## ***Distribution facilities nationwide***

### **Gauteng**

+27 (0)11 822 7242  
info@technicalfinishes.com  
35 Activia Road  
Activia Park, Germiston

### **KwaZulu-Natal**

+27 (0)31 705 7733  
infokzn@technicalfinishes.com  
5 Clark Road  
Westmead, Durban

### **Western Cape**

+27 (0)21 535 4455  
infowc@technicalfinishes.com  
Cnr Gunners Circle & Fisher  
Avenue, Epping 1, Cape Town

### **Eastern Cape**

+27 (0)41 451 3944  
infoec@technicalfinishes.com  
232 Commercial Road  
Sidwell, Port Elizabeth