

# SPECIALIST INDUSTRIAL FLOORING



**TECHNICAL FINISHES**  
SPECIALIST FLOORING AND CONSTRUCTION SOLUTIONS

**FOOD PROCESSING AND COLD STORAGE**



**PHARMACEUTICAL INDUSTRY**



**BEVERAGE MANUFACTURING**



**MANUFACTURING**



**AUTOMOTIVE MANUFACTURING**



**PACKAGING**



**CHEMICAL PROCESSING PLANTS**



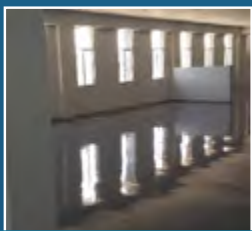
*With more than 30 years of experience in specialist industrial epoxy and polyurethane flooring systems, our superior-quality range of industrial flooring products has become the industry benchmark for flooring excellence.*

# HEAVY DUTY FLOORING THAT LASTS

Technical Finishes is the leader in superior specialist epoxy and polyurethane flooring systems, manufactured under quality-assured ISO 9001\* standards, offering unmatched durability and strength. Designed to handle heavy equipment, constant foot traffic, harsh chemicals and extreme temperature fluctuations.

Our HACCP-certified industrial flooring range offers unique solutions to meet the most stringent hygienic and anti-bacterial demands of the Food and Beverage industries, delivering unparalleled peace of mind.

## OUR INDUSTRIAL FLOORING RANGE INCLUDES:



Epoxy floor coatings



Concrete primers



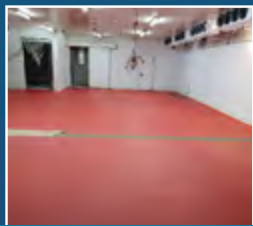
High-build coatings



Polyurethane floor coatings



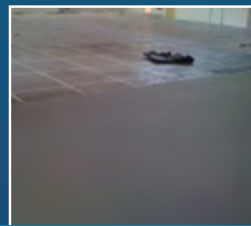
Epoxy self-levelling screeds



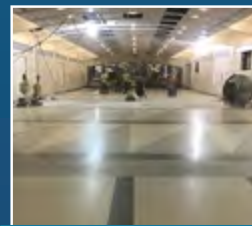
Polyurethane floor screeds - Polyscreed systems



Epoxy screeds



Anti-static flooring



Densifiers and sealers Pentra-Sil lithium silicates

## OUR UNIQUE PRODUCT BENEFITS



Seamless, attractive flooring



Low maintenance and easy to clean



Anti-microbial protection with added Silver Ion Technology



Non-slip finish



Abrasion resistant



Excellent durability



## COLOUR RANGE



\* Please note the colours reproduced here may only be used as a guide as they are subject to printing constraints.

# EPOXY & POLYURETHANE FLOOR COATINGS

## Solidkote WB

A water-based epoxy coating available in various colours or clear, offering an easy to clean, cost-effective hygienic coating, which can be applied to damp substrates. Ideally suited for either floor or wall applications. Also available with an anti-fungal additive, enabling added protection in food and beverage processing.

## Solidkote PU

A high-performance, single pack, moisture-cured polyurethane coating that delivers exceptional scratch-and-abrasion resistance. Available in a matte or gloss finish.

## Solidkote UVC

Tough, durable, UV-resistant and colour stable polyurethane coating for concrete or steel. Available in various colours or clear. Also available in a non-slip option for use in wet areas. Used for walls and floors such as concrete floors, structural steel, chemical plants, food processing, plating facilities, laboratories, exterior tanks and marine applications above water-line.

## Solidkote Impact

Heavy-duty, solvent-free, high-build polyurethane coating. Exceptional chemical and impact resistance while maintaining a tough, elastic and flexible form, ideal for demanding industrial applications.

## Solidguard HCP

High-performance and chemical-resistant epoxy coating specifically formulated for demanding acid or highly alkaline environments. Extremely tough and durable, low odour and ideal for protection of concrete tanks, equipment bases, floors and drains against aggressive chemicals.

## Solidkote Robust

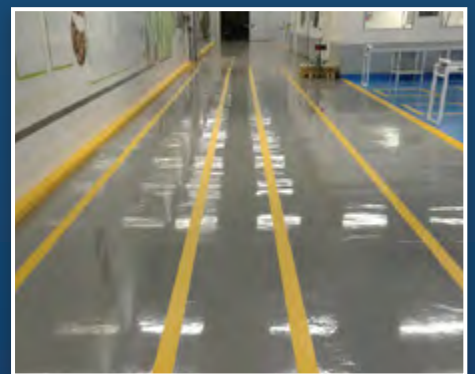
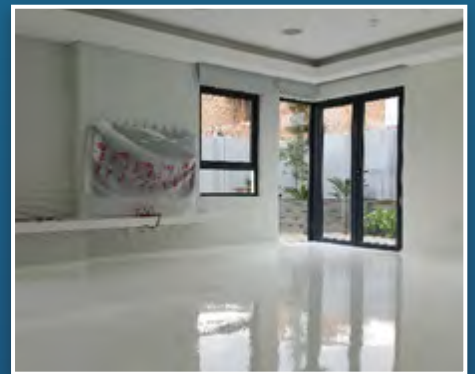
High-build epoxy coating delivering a seamless, durable, high-gloss and chemical-resistant floor finish. Offering a cost-effective solution for use in factories, warehouses, the pulp and paper industry, and tank farms. The industry standard with proven performance.

## Solidkote Ultra Tough

High-performance, rapid-curing, impact-resistant polyaspartic coating system. Offering ultra-quick installation and walk-on time in 2-hours, delivering a high-gloss finish, which maintains flexibility and integrity with time and bonds to a variety of substrates.

## Solidkote Q9 Sealer

High-performance, clear, water-based polyurethane coating designed for sealing decorative cementitious flooring, terrazzo and concrete. Also suitable for sealing parquet and engineered timber flooring.



## FLOOR COATINGS & SELF-LEVELLING SCREEDS COLOUR RANGE



\* Please note the colours reproduced here may only be used as a guide as they are subject to printing constraints.

# SELF-LEVELLING SCREEDS

# SOLIDFLOW

## Solidflow SL 1000

Self-levelling 1mm epoxy flooring system offering excellent abrasion and chemical resistance on concrete floors. Delivers a seamless, smooth, glossy, hygienic surface ideally suited to dry processing areas.



## Solidflow SL 2000

Heavy-duty, 2mm self-levelling epoxy flooring system with exceptional wear, chemical and abrasion resistance. Offering a seamless, hygienic gloss finish.

## Solidflow Hydro-Proof

A technically advanced, three-component resin system with excellent durability, chemical resistance, as well as protection against moisture, rising damp and hydrostatic pressure. Suitable to be used in areas with no DPC underlayment.



## Solidflow SL ESD

A heavy-duty, self-levelling anti-static epoxy floor system that safeguards both personnel and sensitive electronic equipment from electrostatic discharge (ESD). Suitable for application in dry process areas in the packaging, electronic, automotive, food and pharmaceutical industries.



# COMMERCIAL & DECORATIVE FLOORING

## Marble Stone TZ

A high-performance, decorative epoxy resin modified micro terrazzo flooring system. Engineered to deliver industrial strength and exceptional underfoot performance, it's the perfect blend of durability and style for any commercial or residential environment.



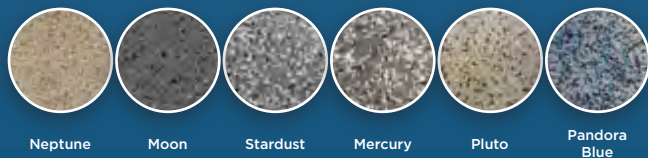
## Polyscreed GHF Terrazzo

A unique polyurethane terrazzo floor screeding system with an attractive range of coloured aggregates and colours to compliment many environments. This system provides the ultimate in performance flooring with a decorative and aesthetic appeal.



## Polyscreed Quartz

An attractive, colour quartz screed, which is power-troweled to achieve ultimate abrasion and wear resistance. This flooring system exhibits an attractive satin finish, ideal for commercial environments.



## Polyscreed Earth Flow

A decorative polyurethane cement composite self-levelling flooring system designed to combine the ultimate in performance and decorative appeal.



## Solidflow Quartz

Self-levelling, decorative 2 - 4mm epoxy floor system with a unique micro quartz speckled appearance. Ideal for commercial and industrial environments. Available in gloss or matte finish.

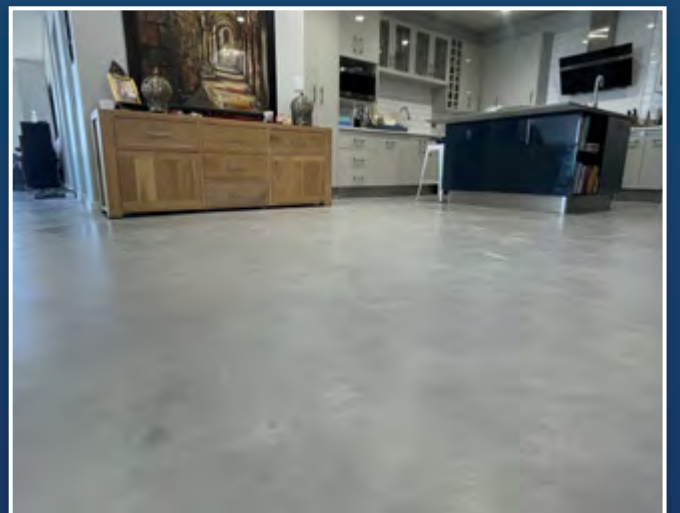


## Marble-Flow

A high performance, decorative epoxy cement flooring system with a thickness of 1 - 1.5mm. The system delivers high wear resistance and durability, along with an aesthetically pleasing mottled finish.



*\* Please note the colours reproduced here may only be used as a guide as they are subject to printing constraints.*



# POLYSCREED POLYURETHANE FLOOR SCREEDS



Heavy-duty, high chemical and impact-resistant polyurethane screeds for demanding environments.

## Polyscreed SL

Self-levelling 2 - 3mm polyurethane screed, excellent chemical resistance with a matte finish. Ideal for light-to-medium-duty environments.

## Polyscreed MD

Medium-duty, 4mm screed with excellent levelling for dry or wet areas. Provides a seamless, smooth finish with mild slip resistance.

## Polyscreed UT

An ultra-tough, 5mm, textured, slip-resistant screed for heavy-duty zones, including slippery environments.

## Polyscreed RT

A 6mm durable, easy-to-apply "rake and trowel" system with a non-slip texture for heavy-duty environments.

## Polyscreed HF

Heavy-duty, 6 - 9mm hand-trowelled screed for high-traffic, wet zones and extreme temperature exposure (-20°C to 120°C).

## Polyscreed WR

Polyurethane wall render for covings and vertical applications between 3 - 6mm.

## Polyscreed Lockcoat

Polyurethane sealer coat for Polyscreed WR or rejuvenation of polyurethane screeds.

## Polyscreed MD ESD

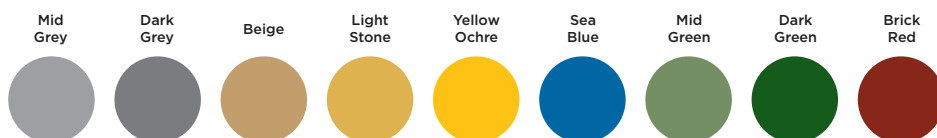
A high-performance, 4mm antimicrobial polyurethane floor screed to combat electrostatic activity. Solvent and chemical-resistant, anti-static matte finish.

## Polyscreed PUMMA

A decorative 4mm PU-hybrid flake floor system, sealed with a high performance methyl methacrylate resin, offering superior durability, wear resistance, and colour stability.



## POLYSCREED COLOUR RANGE



\* Please note the colours reproduced here may only be used as a guide as they are subject to printing constraints.



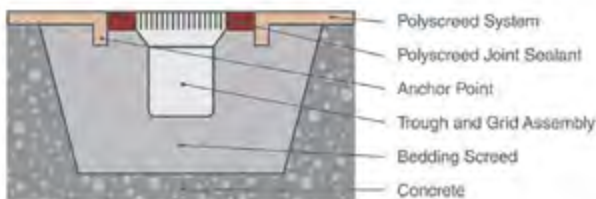
## Typical (expansion) Movement Joint



**A semi-flexible joint solution used to arrest deterioration triggered by existing structural joints.**

This sealant can be applied to floors that have been installed over pre-existing structural movement joints. Designed to be used with Polyscreed systems to prevent ruptures in the new surface.

## Typical Drainage Channel Arrangement



**A semi-flexible joint solution allowing for the installation of a drainage system.**

Thermal expansion rates vary and as a result this semi-flexible movement joint has been created to be used as a mechanism to separate Polyscreed material from any stainless steel drainage elements as well as the sub-floor.

## Typical Floor to Wall Detail



**A floor to wall coving system for use with Polyscreed antimicrobial flooring.**

Polyscreed WR Cove is the preferred method to provide a sanitary transition between the Polyscreed material and the adjacent wall. Polyscreed WR Cove is compatible with all systems in the Polyscreed range.





Technical Finishes can offer tailored solutions for various industrial sectors and environments. The unique challenges, specific needs, and stringent requirements of each industry sector receive our focused attention and are addressed with suitable, customised specifications.

Our team of technical experts offers you informed recommendations on which of our high-performance products will best deliver on your unique flooring needs. Technical Finishes delivers robust, highly resilient flooring systems for all areas and workspaces.



**DAIRY PROCESSING**



**MEAT PROCESSING**



**BOTTLING PLANTS**



**WINERIES**



**BAKERIES**



**FOOD PACKAGING**

**Leading manufacturers of specialist epoxy and polyurethane flooring systems, specialised construction and corrosion protection products.**



**Distribution facilities nationwide**

**Western Cape**  
 +27 (0)21 535 4455  
[InfoWC@saint-gobain.com](mailto:InfoWC@saint-gobain.com)  
 Cnr Gunners Circle & Fisher Avenue, Epping 1, Cape Town

**Eastern Cape**  
 +27 (0)41 451 3944  
[InfoEC@saint-gobain.com](mailto:InfoEC@saint-gobain.com)  
 13 Hammond Street, Sidwell, Port Elizabeth

**Gauteng**  
 +27 (0)11 822 7242  
[InfoGP@saint-gobain.com](mailto:InfoGP@saint-gobain.com)  
 35 Activia Road, Activia Park, Germiston

**KwaZulu-Natal**  
 +27 (0)31 705 7733  
[InfoKZN@saint-gobain.com](mailto:InfoKZN@saint-gobain.com)  
 5 Clark Road, Westmead, Durban



[InfoTF@saint-gobain.com](mailto:InfoTF@saint-gobain.com) • [www.technicalfinishes.com](http://www.technicalfinishes.com)

