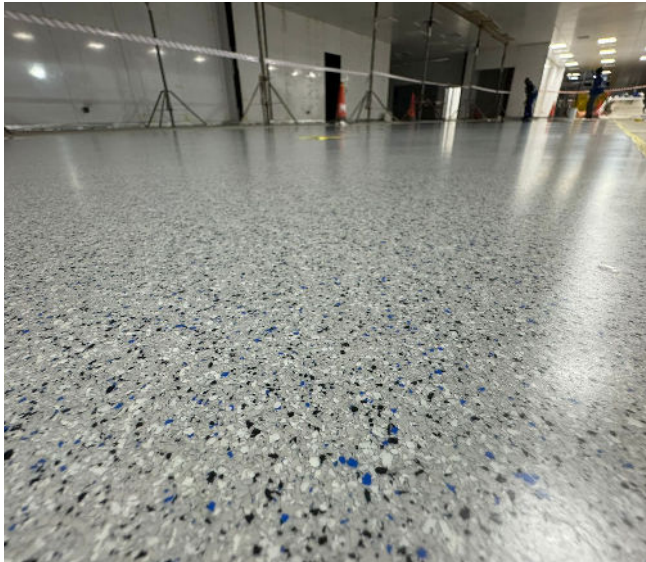


# POLYSCREED PUMMA

## Decorative 4 - 5 mm Hybrid Flake System



A high performance, hygienic and UV-stable resin flooring system providing impact resistance and unparalleled durability.

Polyscreed PUMMA provides a decorative flake floor finish sealed with high performance methyl methacrylate resin. Ideal for applications in the pharmaceutical industry, hospitals, commercial and retail industries where durability and fast turnaround is required.

### UNIQUE PRODUCT BENEFITS

- Excellent durability.
- Aesthetically pleasing textured finish.
- Excellent UV resistance (non-yellowing).
- Colour stable.
- Quick turnaround.
- Excellent chemical resistance.
- Excellent stain resistance.
- Variety of colour flakes available

### TECHNICAL DETAILS

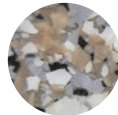
Compressive Strength	> 50 MPa	BS6319
Tensile Strength	> 10 MPa	
Flexural Strength	> 20 MPa	
Concrete Adhesion	> 1.5 MPa (Concrete failure)	ASTM D7234
Slip Resistance	Dry > 56 Wet > 45	TRRL Pendulum Slip Test
Water Uptake (Permeability)	Nil	Karsten Test
Heat Resistance	Up to 90°C	
Foot Traffic	12 to 16 hrs	
Heavy Traffic	24 hrs	

### SYSTEM BUILD-UP

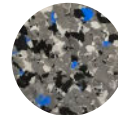
Polyscreed PU Primer	2.5 m <sup>2</sup> / L
Polyscreed PUMMA Bodycoat	3 to 3.5 mm
Polyscreed PUMMA Flake	350 to 400 g / m <sup>2</sup>
Polyscreed PUMMA Sealer	First coat @ 0.35 L / m <sup>2</sup> Second coat @ 0.25 L / m <sup>2</sup> (0.6 L / m <sup>2</sup> total)

### PRODUCT COLOUR RANGE:

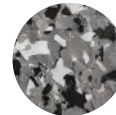
Cabin Fever



Comet



Domino



Quicksilver



\*Product colours may differ from the ones shown above. For a full colour chart or for samples, contact your nearest Technical Finishes branch.

**Leading manufacturers of specialist epoxy and polyurethane flooring systems, specialised construction and corrosion protection products.**

#### Distribution facilities nationwide

**Western Cape**

+27 (0)21 535 4455

**Eastern Cape**

+27 (0)41 451 3944

**Gauteng**

+27 (0)11 822 7242

**KwaZulu-Natal**

+27 (0)31 705 7733

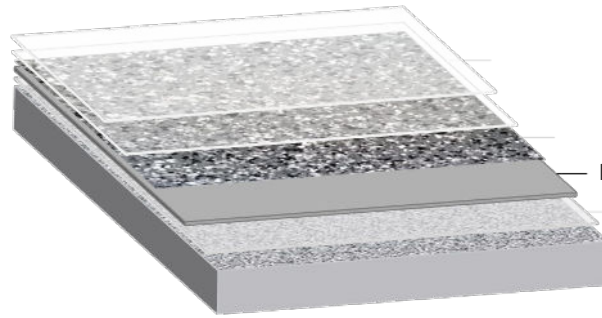


InfoTF@saint-gobain.com • www.technicalfinishes.com


**TECHNICAL FINISHES**  
SPECIALIST FLOORING AND CONSTRUCTION SOLUTIONS

## APPLICATIONS:

- Pharmaceutical industry
- Change rooms
- Canteens
- Commercial office blocks
- Healthcare and veterinary facilities
- Ablutions
- Retail industry



Polyscreed PUMMA Sealer  
(2 x coats)

Polyscreed PUMMA Flakes

Polyscreed PUMMA Bodycoat

Polyscreed PU Primer  
with fine scatter  
Concrete Substrate

## SUBSTRATE REQUIREMENTS

Concrete substrates must have a minimum compressive strength of 20 to 25 MPa, a minimum tensile pull-off strength of 1.5 MPa and be free of oil, fat, grease, dust, and loose friable materials. The surface finish of the concrete should be class 2 (AS 3610).

Note: Any filling of blowholes / voids and surface levelling of substrate can be achieved using appropriate products within Technical Finishes Construction Range (please speak to one of our technical sales representatives).

## PREPARATION

Remove all previous coatings, unbonded concrete and laitance mechanically through diamond grinding, abrasive blasting or scarifying to obtain a sound and porous surface (sandpaper texture). Sweep dust and loose debris followed by vacuuming, to obtain a dry and dust-free surface. It is standard practice to ensure grooves 5 mm by 5 mm, run parallel to and 150 mm from all walls, plinths, finished edges, expansion joints, columns.

## PRIMING

Ensure application conditions of 15 to 28°C.

Prime the prepared concrete substrate with **Polyscreed PU Primer** at 2.5 m<sup>2</sup> / L. Apply fine scatter at 0.5 kg / m<sup>2</sup>.

Allow the **Polyscreed PU Primer** to cure for at least 16 hours prior to the application of **Polyscreed PUMMA Bodycoat**.

## INSTALLATION:

Ensure application conditions of 15 to 28°C. Ensure adequate lighting to achieve an even and level spread. Installation should not be attempted unless application team is fully trained.

### Mixing

Open both aggregate bags (Part 3) before the mixing starts to ensure no time is wasted between mixes / kits. Shake Part 1, Part 2 and Part 4 vigorously prior to opening.

Set up the mixing machine as close to the floor as possible (Use two mixing vessels to ensure time between mixes / kits is minimized).

Decant Part 1 and Part 4 (pigment paste) into mixing vessel and mix for 5 seconds (until uniform).

Start timer when adding Part 2 and mix for 30 seconds. Once 30 seconds is complete, pour Part 3 filler into the mix and mix for a further 2 minutes until uniformly wetted out.

### Placing of Bodycoat

Pour out the mix into the demarcated area in a long ribbon and pull the mix with an 8 mm or 10 mm notched rake. As soon as the first mix has been troweled, the next mix should be delivered to the floor and placed into the previous mix. Spike roll immediately to remove trowel marks and mix join regions (regions where two mixes meet). Ensure spiking is within 8 minutes of the start time of each mix.

**Leading manufacturers of specialist epoxy and polyurethane flooring systems,  
specialised construction and corrosion protection products.**

Distribution facilities nationwide

Western Cape  
+27 (0)21 535 4455

Eastern Cape  
+27 (0)41 451 3944

Gauteng  
+27 (0)11 822 7242

KwaZulu-Natal  
+27 (0)31 705 7733



InfoTF@saint-gobain.com • www.technicalfinishes.com



**TECHNICAL FINISHES**  
SPECIALIST FLOORING AND CONSTRUCTION SOLUTIONS

## Flake Broadcast

With the aid of spike shoes, broadcast the **Polyscreed PUMMA flakes** at 350 - 400 g / m<sup>2</sup> onto the wet **Polyscreed PUMMA bodycoat** and use a leaf blower to assist distribution. For best results, use a leaf blower with fitted hopper.

Allow the flakes to settle on the wet **Polyscreed PUMMA surface** and cure overnight. Remove excess flake particles after 16 hours of curing by de-nibbing with a clean steel trowel and sweeping up the loose flake for reuse.

## SEALING

Apply two coats of **Polyscreed PUMMA Clear Sealer**. First coat to be applied at 0.35 L / m<sup>2</sup> and the second coat at 0.25 L / m<sup>2</sup> (total 0.6 L / m<sup>2</sup>) by medium mohair roller application method to seal the flake and produce a tough, durable surface finish.

Allow 3 to 5 hours between sealer coats.

## MAINTENANCE

Regular cleaning extends the service life of the **Polyscreed PUMMA** system. Maintenance is to be carried out using Liquid Action which complies with SANS 1344 Medium Duty Solvent Detergent (2112/P3325/10/ID). Please refer to full cleaning regime for Polyscreed polyurethane flooring systems.

## HEALTH AND SAFETY

Please read Safety Data Sheet and specific health and safety data for this product provided in compliance with the requirements of OHSA No.85 of 1993. The finished system is not hazardous to health or the environment.

## WARRANTY

Technical Finishes products are manufactured under high quality standards and are warranted against defective materials and are sold subject to standard Terms and Conditions of Sale, copies of which can be obtained upon request. Technical Finishes deals with approved applicators and carry a back to back warranty with these clients. Technical Finishes cannot be held responsible for the workmanship in surface preparation and application of our products, it is understood that the approved contractor will guarantee such workmanship and application. It is vital that the application is done in accordance to our specification.

**Leading manufacturers of specialist epoxy and polyurethane flooring systems,  
specialised construction and corrosion protection products.**

### Distribution facilities nationwide

**Western Cape**

+27 (0)21 535 4455

**Eastern Cape**

+27 (0)41 451 3944

**Gauteng**

+27 (0)11 822 7242

**KwaZulu-Natal**

+27 (0)31 705 7733



**TECHNICAL FINISHES**  
SPECIALIST FLOORING AND CONSTRUCTION SOLUTIONS



InfoTF@saint-gobain.com • www.technicalfinishes.com